



# Parts Manual

## *Ransomes Gang Mower*

Sportcutter Mk11, Magna Mk13

Product codes: LBMA171	Sportcutter Gang unit on pneumatic wheels
LBMA172	Sportcutter Gang unit on steel wheels
LJBA003	Sportcutter 3-unit on pneumatic wheels
LJBA004	Sportcutter 3-unit on steel wheels
LJBA011	Sportcutter Mounted 3-unit on pneumatic wheels
LJBA005	Sportcutter 5-unit on pneumatic wheels
LJBA006	Sportcutter 5-unit on steel wheels
LBMA174	Magna Gang unit on pneumatic wheels
LBMA173	Magna Gang unit on steel wheels.
LJBA015	Magna 3-unit on pneumatic wheels
LJBA016	Magna 3-unit on steel wheels
LJBA023	Magna Mounted 3-unit on pneumatic wheels
LJBA017	Magna 5-unit on pneumatic wheels
LJBA018	Magna 5-unit on steel wheels

### **WARNING**

WARNING: If incorrectly used this machine can cause severe injury. Those who use and maintain this machine should be trained in its proper use, warned of its dangers and should read the entire manual before attempting to set up, operate, adjust or service the machine.

Ransomes Jacobsen Limited reserves the right to make design changes without obligation to make these changes on units previously sold and the information contained in this manual is subject to change without notice.

Section	Page	Page
INTRODUCTION .....		3
GANG MOWER CUTTING CYLINDER & ROLL .....		8
GANG MOWER DRIVE .....		12
GANG MOWER STEEL WHEELS .....		16
GANG MOWER PNEUMATIC WHEELS .....		17
GANG MOWER MOUNTED 3 UNIT FRAME .....		18
EXTENSION WINGS .....		22
TWIN COUPLING FRAME .....		24
SHORT DRAWBAR .....		26
LONG DRAWBAR .....		28
TRACTOR LINK .....		30
TRAILING HITCH .....		31
UNIT FRAME .....		33

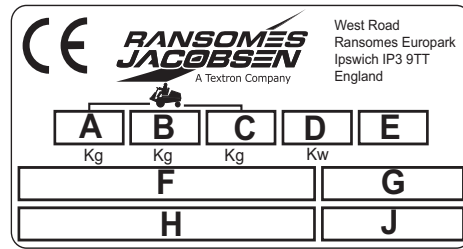
# INTRODUCTION

---

## INTRODUCTION

### PRODUCT IDENTIFICATION

- A Maximum front axle load in Kg (for machines being driven on the highway)
- B Gross weight (mass) in Kg
- C Maximum rear axle load in Kg (for machines being driven on the highway)
- D Power in Kw
- E Date code
- F Machine type (Designation)
- G Product code
- H Product name
- J Serial number



**HOW TO USE THE PARTS MANUAL**

**ITEM NUMBER**

Each part which is identified in the illustrations has an item number. Parts which do not have an item number may not be readily identified in the illustration but are usually closely associated with the immediately adjacent part.

**ASSEMBLIES**

A complete assembly, e.g. a wheel motor or hydraulic motor or roll assembly, is listed as a complete item with subsequent individual components listed separately.

The assembly is listed under it's part number with component parts being listed offset to the right, e.g: -

ITEM	PART NO.	DESCRIPTION	QTY	REMARKS
4295	MBG2504	Bracket	1	
4296	MBG3848	Latch	2	
4298	450865	Screw, M8 X 20, Sckt Csk Hd	2	
4300	450378	Nut, M8 Nyloc	2	
4301	WI001	Set Of Wheels	1	
4301.1	008160	• Wheel & Hub Assy	1	(Rear)
4301.2	008170390	•• Tyre	1	
4301.3	008161830	•• Rim	1	
4301.4	008169140	•• Hub Assy.	1	
4301.5	008169150	•• Cap	1	
4301.6	002993010	•• Lubricator	1	
4301.7	008161990	• Wheel & Tyre	2	(Front)
4301.8	008170780	•• Tyre	2	

It may not be possible to illustrate every item. With certain items purchased from outside suppliers some component parts may not be available from Ransomes and may need to be specially ordered from the supplier.

**QUANTITIES**

Quantities shown are for one assembly or sub - assembly.

**USING THE PARTS LIST**

Determine the function and application of the part required. Turn to the main index page and select the appropriate section. Locate the part on the illustration and parts list and read off the quantity from the appropriate MODEL column.

**NUMERICAL INDEX**

This is a summary of all part numbers used in the manual arranged in numerical sequence and showing the page and item number under which the parts appear.

**ORDERING OF SPARE PARTS**

When ordering replacement parts, it is most important to quote the SERIAL NUMBER of the machine, PART NUMBER, DESCRIPTION and QUANTITY required.

Any arbitrary modifications carried out on this machine may relieve the manufacturer of liability for any resulting damage or injury.

**ABBREVIATIONS**

N/A Not Available  
AR As Required

# INTRODUCTION

---

## GUIDELINES FOR THE DISPOSAL OF SCRAP PRODUCTS

### DURING SERVICE LIFE

Used oil, oil filters and engine coolant are hazardous materials and should be handled in a safe and environmentally responsible way.

In the event of a fluid leak, contain the spill to prevent it entering the ground or drainage system. Local legislation will dictate how such spills are to be treated.

Following the maintenance procedures laid out in this manual will ensure that the impact the machine has on the local environment is controlled.

When it has been identified that a turf care product has no further functional value and requires disposal, the following actions should be taken.

### END OF SERVICE LIFE

These guidelines should be used in conjunction with applicable Health, Safety and Environmental legislation and use of approved local facilities for waste disposal and recycling.

- Position the machine in a suitable location for any necessary lifting equipment to be used.
- Use appropriate tools and Personal Protective Equipment (PPE) and take guidance from the technical manuals applicable to the machine.
- Remove and store appropriately:
  1. Batteries
  2. Fuel residue
  3. Engine coolant
  4. Oils
- Disassemble the structure of the machine referring to the technical manuals where appropriate. Special attention should be made for dealing with 'stored energy' within pressurised elements of the machine or tensioned springs.
- Any items that still have a useful service life as second hand components or can be re - serviced should be separated and returned to the relevant centre.
- Other worn out items should be separated into material groups for recycling and disposal consistent with available facilities. More common separation types are as follows:
  - Steel
  - Non ferrous metals
    - Aluminium
    - Brass
    - Copper
  - Plastics
    - Identifiable
    - Recyclable
    - Non recyclable
    - Not identified
  - Rubber
  - Electrical & Electronic Components
- Items that cannot be separated economically into different material groups should be added to the 'General waste' area.
- Do not incinerate waste.

Finally update machinery records to indicate that the machine has been taken out of service and scrapped. Provide this serial number to Ranmsomes Jacobsen Warranty department to close off relevant records.

**SPARES STOCKING GUIDE**

To keep your equipment fully operational and productive, Ransomes suggests you maintain a stock of the more commonly used maintenance items. We have included part numbers for the additional support materials and training aids.

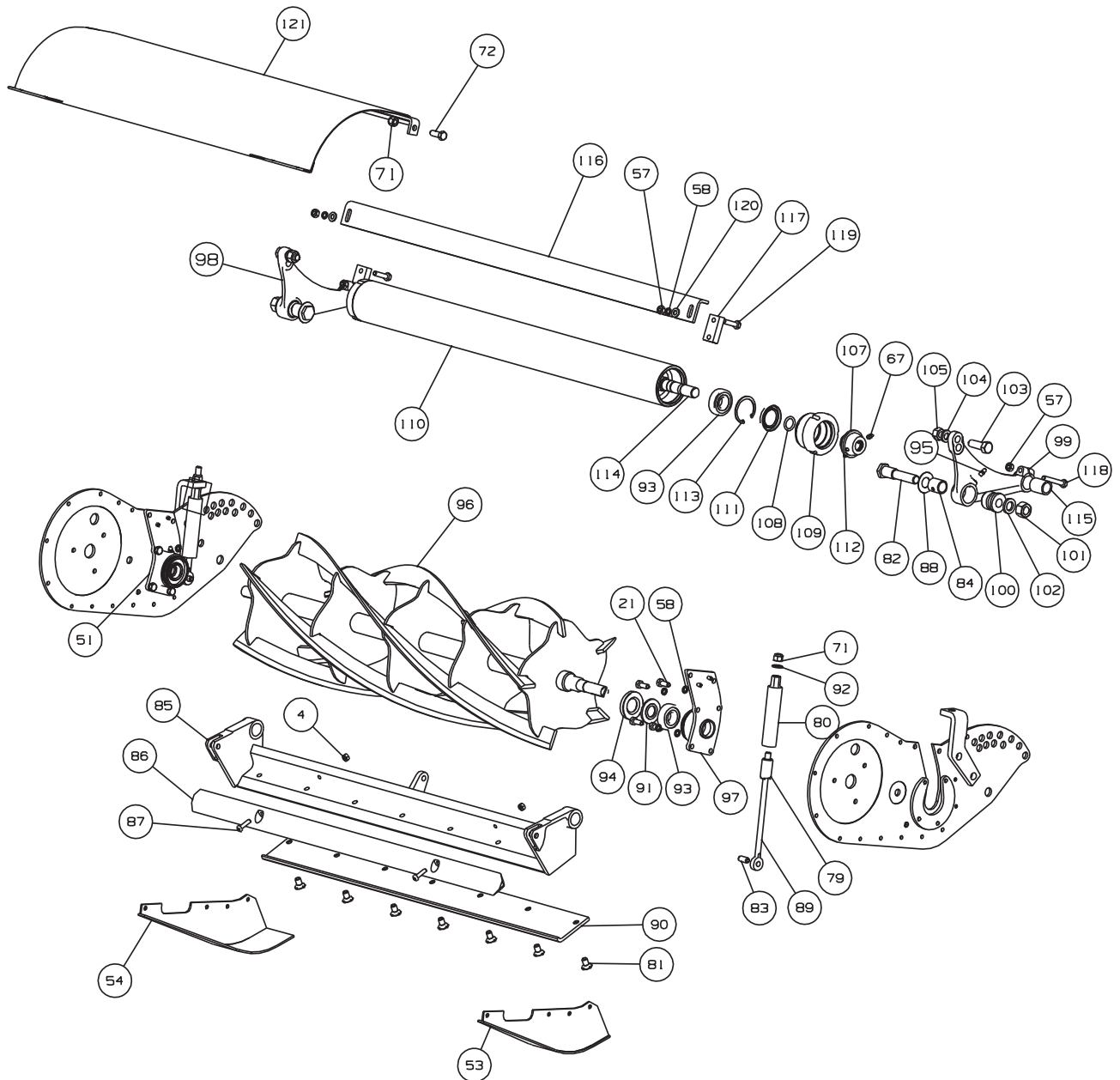
SERVICE SUPPORT MATERIAL	
Part No.	Description
24684G - GB	Safety & Operators Manual United Kingdom
24684G - IT	Safety & Operators Manual Italy
24684G - GR	Safety & Operators Manual Greece
24684G - RU	Safety & Operators Manual Russia

**SERVICE PARTS**

SERVICE PARTS			
Part No.	Description	Part No.	Description
469006182	Steel Roadwheel Stud		
MBA7024A	Bottom Blade		
MBC9973A	Magna Cutting Cylinder 5k		
MBC8868A	Sportcutter Cutting Cylinder 6k		

GANG MOWER CUTTING CYLINDER & ROLL

Illustration Number: gang\_mower\_cylinder\_02-04-2013





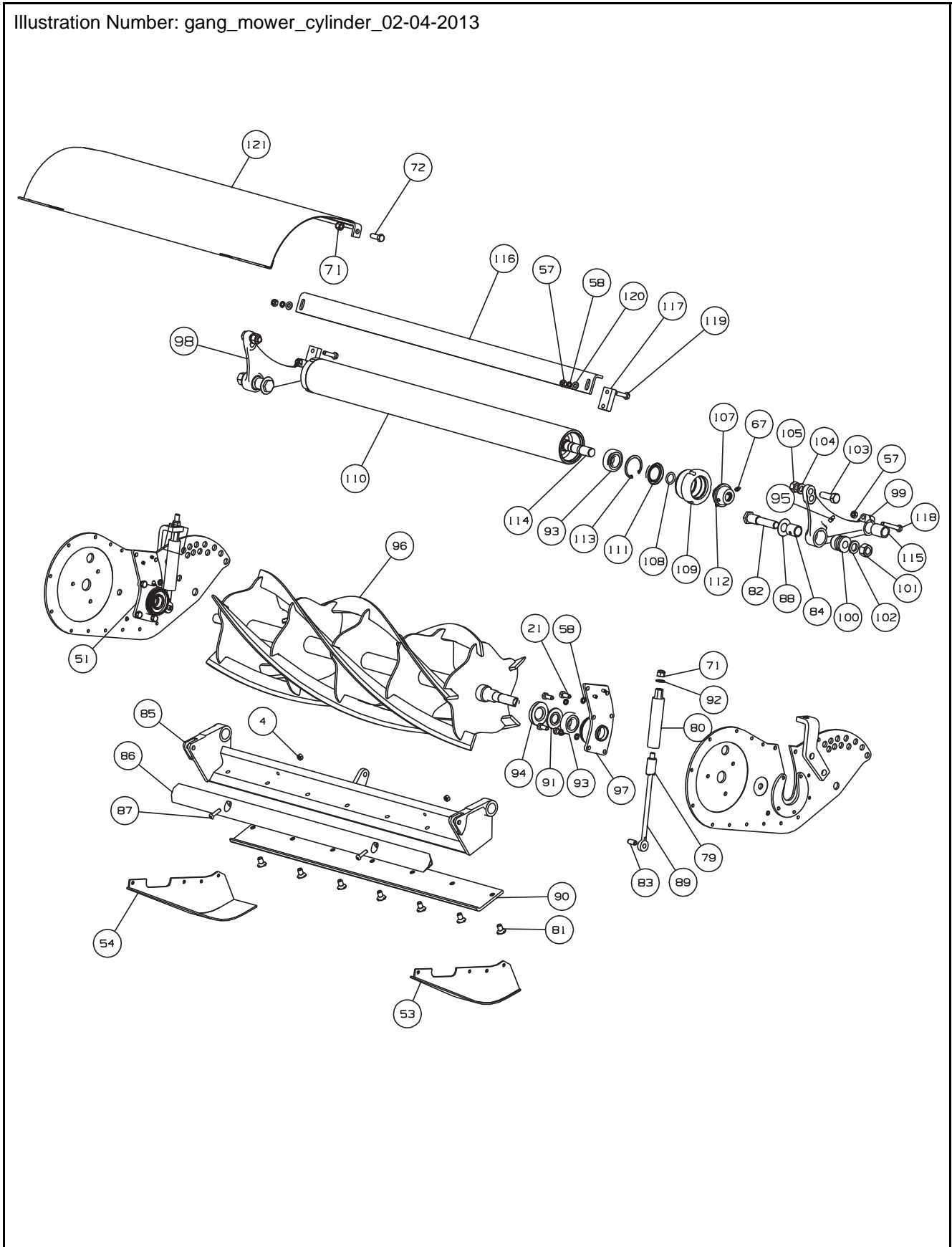
## GANG MOWER CUTTING CYLINDER &amp; ROLL

ITEM	PART NO.	DESCRIPTION	QTY.	
21	456010200	Screw-hex 5/16-24 x 3/4	12	
51	MBB2220A	Housing - RH	1	
53	MBC8595	Deflector RH	1	
54	MBC8596	Deflector LH	1	
67	002993013	Lubricator - M6 Straight	4	
57	450020053	Nut - Hex 5/16 - 24	12	
58	450411	Lockwasher - M8 X 12.75 X 2	12	
71	001399105	Nut - Hex 3/8 - 24 Nyloc	4	
72	456010381	Screw - Hex 3/8 - 24 X 1	2	
79	LTC4618	Adjustable Tube	2	
80	MBB2206	Adjustable Sleeve	2	
81	001190000	Screw - Countersunk 3/8 - 16 X 11/16	7	
82	MBB2202	Stud, Pivot	2	
83	455100088	Pin - Tension 3/8 X 7/8	2	
84	LTC0629	Bushing	2	
85	LMAY601A	Bottom Block & Blade Assembly	1	Sportcutter
*	LMAY602A	Bottom Block & Blade Assembly	1	Magna
*	539000690	Bush	2	
86	LTC0635A	Wooden Fillet	1	
87	456040055	Screw - Pan Hd 1/4 - 28 X 1	2	
88	461901645	Spring - Disc 19.35 X 38.1 X 1.14	2	
89	MBE2212	Adjust Screw	2	
90	MBA7024A	Bottom Blade Standard	1	
91	MBB2239	Washer 13/16" X 45mm X 0.158	2	
92	452000326	Washer - 3/8 X 3/4 X .072	2	
93	002036049	Brg - Ball 20 X 47 X 14	4	
94	870003801	Oil Seal - 1" X 2" X 7	2	
*	LTC0655	Cover, Dust	2	
95	842000044	Lubricator - 1/4" Straight	4	
96	MBC8868A	Cutting Cylinder - 6 Knife	1	Sportcutter
96	MBC9973A	Cutting Cylinder - 5 Knife	1	Magna
97	MBB2221A	Housing, LH	1	
*	451450	• Pin - Spirol 6 x 20	2	
*	MBB2220A	Housing, RH	1	
*	451450	• Pin - Spirol 6 x 20	2	
98	MBB1252	Carriage RH	1	Magna
98	MBB1250	Carriage RH	1	Sportcutter
99	MBB1253	Carriage LH	1	Magna
99	MBB1251	Carriage LH	1	Sportcutter
100	LTC4787	Sleeve	2	
101	450020176	Nut - Hex 5/8 - 18	2	
102	450425	Lockwasher - M16 X 27.3 X 3.7	2	
103	456010577	Screw - Hex 1/2 - 20 X 1.1/2	2	

\* Not Illustrated

GANG MOWER CUTTING CYLINDER & ROLL

Illustration Number: gang\_mower\_cylinder\_02-04-2013

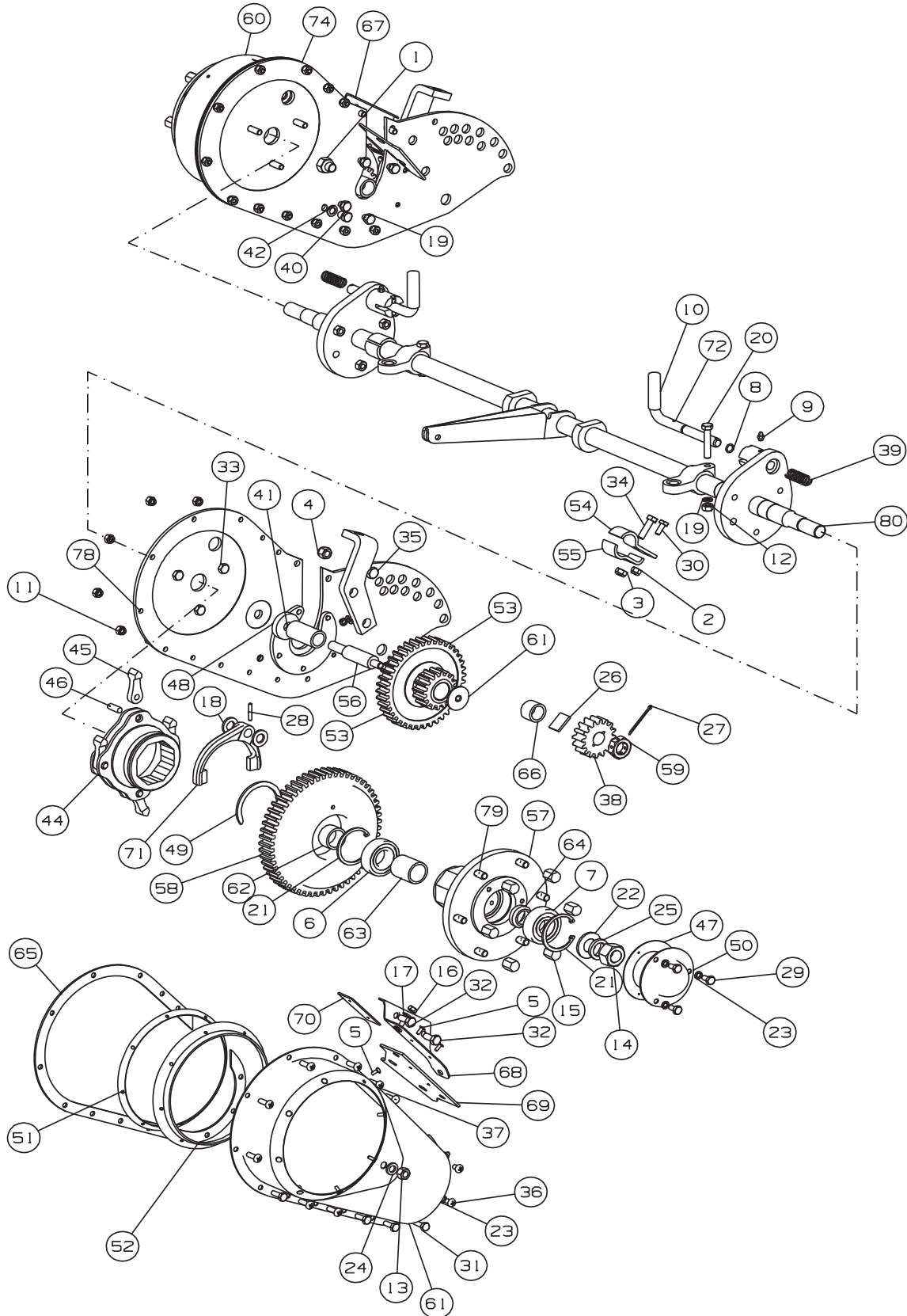


## GANG MOWER CUTTING CYLINDER &amp; ROLL

ITEM	PART NO.	DESCRIPTION	QTY.	
104	452200176	Lockwasher - 1/2 X .873 X .125	2	
105	450020142	Nut - Hex 1/2 - 20	2	
107	MBB9264A	End Boss	2	
108	002212108	O - Ring 18.64 Id X 3.53 Sect	2	
109	MBB9263	Roll End	2	
110	MBB9261	Roll Tube	1	
111	870002334	Oil Seal - 30 X 47 X 7	2	
112	450959	Setscrew M6 - 1.0 X 8, Cup Point	2	
113	451977	Circlip - Int 47 X 1.75 T	2	
114	Mbb9262	Spindle	1	
115	LTC4742c	Distance Piece	2	
116	LTC4962	Scraper Bar	1	
117	LTC4956	Support	2	
118	456010284	Screw - Hex 5/16 - 24 X 2	2	
119	456010250	Screw - Hex 5/16 - 24 X 1 - 1/4	2	
120	450390	Washer - M8 X 17 X 1.8	2	
121	MBF2002	Safety Guard	1	Sportcutter
*	009034890	• Decal - Bystander Warning	1	
*	009034940	• Decal - Cylinder Hazard	1	
*	009114450	• Decal - Cylinder Engage / Transport	2	
*	LTC4942A	Securing Rod	1	
*	450020087	Nut	2	
*	452200134	Lockwasher	2	
*	LTC4943	Spacer - 5/8 x .417 x 1-21/32	2	
121	MBF2003	Safety Guard	1	Magna
*	009034890	• Decal - Bystander Warning	1	
*	009034940	• Decal - Cylinder Hazard	1	
*	009114450	• Decal - Cylinder Engage / Transport	2	

GANG MOWER DRIVE

Illustration Number: gang\_mower\_drive\_27-03-2013



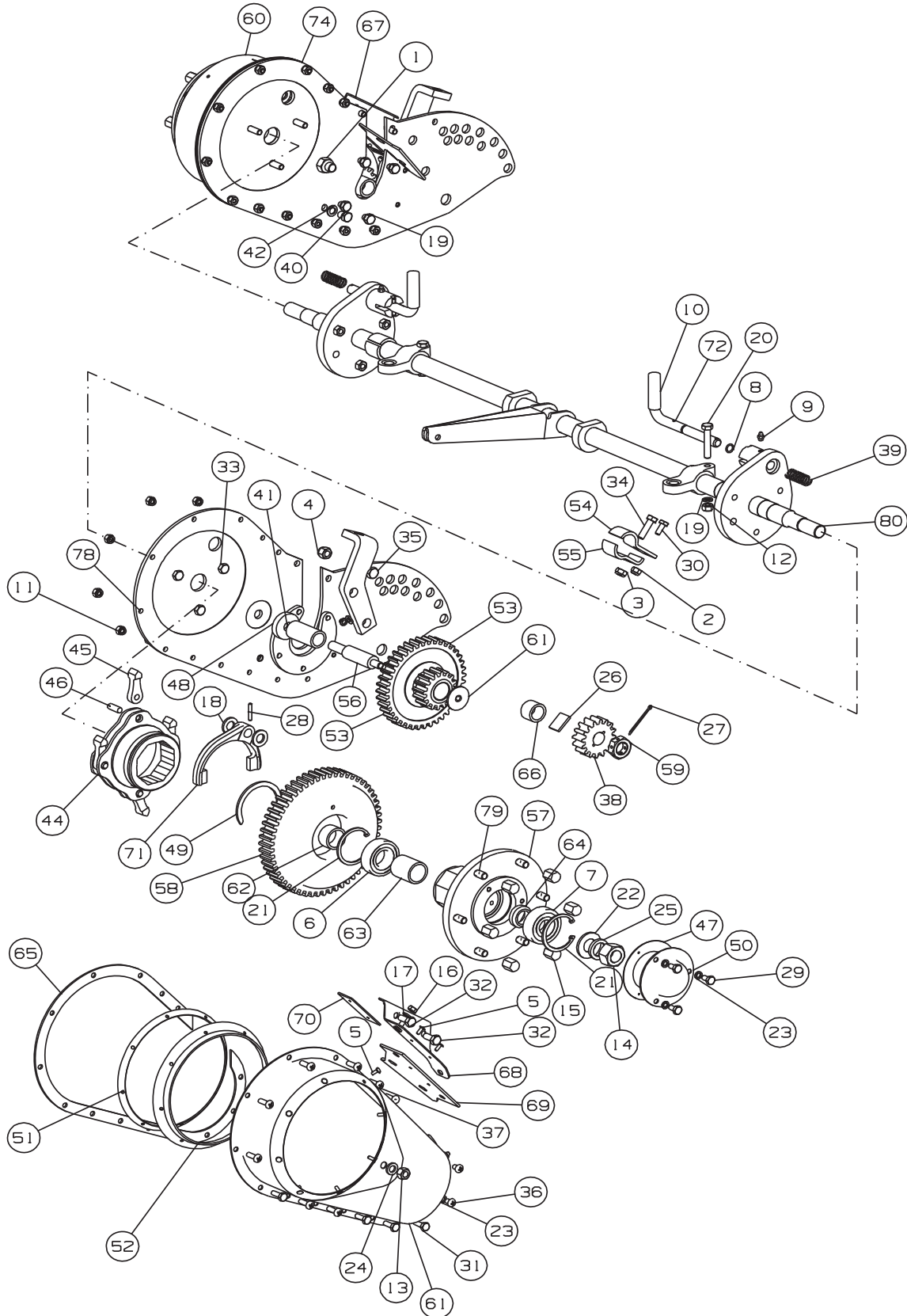
## GANG MOWER DRIVE

ITEM	PART NO.	DESCRIPTION	QTY.	
1	001399032	Nut - Hex 1/2 - 20 Nyloc	2	
4	001399105	Nut - Hex 3/8 - 24 Nyloc	1	
5	001895012	Rivet - Flat Hd 4 X 10	20	
6	002036057	Bearing 25 X 52 X 15	2	
7	002037045	Bearing - Ball 20 X 52 X 15	2	
8	002210122	O - Ring 9.25 ID X 1.78 Sect	2	
9	002993013	Lubricator - M6 Straight	2	
10	009043813	Sleeve	2	
11	450020037	Nut - Hex 1/4 - 28	24	
12	450020053	Nut - Hex 5/16 - 24	8	
13	450020087	Nut - Hex 3/8 - 24	2	
14	450020207	Nut - Hex 3/4 - 16	2	
15	450090800	Nut - Hex 3/8 - 24 Domed	12	
20	451030227	Bolt - Hex 5/16 - 24 X 1 - 3/4	2	
21	451982	Circlip - Internal 52 x 2T	4	
22	452000562	Washer - 3/4 X 1 - 1/2 X .128	2	
23	452200029	Lockwasher - 1/4 X .425 X .072	34	
24	452200134	Lockwasher - 3/8 X .683 X .094	2	
25	452200231	Lockwasher - 3/4 X 1.165 X .176	2	
26	453000026	Key - 1/8 X 3/4 X 1	2	
27	454000328	Split Pin - 1/8 X 1 - 3/4	2	
28	455000947	Pin - Tension 5/32 X 1	4	
29	456010030	Screw - Hex 1/4 - 28 X 1/2	6	
30	456010072	Screw - Hex 1/4 - 28 X 5/8	2	
32	456010200	Screw - Hex 5/16 - 24 X 3/4	12	
33	456010226	Screw - Hex 5/16 - 24 X 1	6	
34	456010234	Screw - Hex 5/16 - 24 X 1 - 1/8	2	
36	456040241	Screw - Pan Hd 1/4 - 28 X 3/8	4	
37	456040372	Screw - Pan Hd 1/4 - 28 X 3/4	16	
38	460010512	Cutting Cylinder Pinion	2	
39	461102831	Spring	2	
40	519004549	Plug	2	
41	590000637	Bush - Oilite 3/4 X 1 X 2	2	
42	670000116	Washer - Fibre 25/64 X 5/8 X 1/16	2	
44	LTC0416	Pawl Box	2	
45	LTC0417	Pawl	8	
46	LTC0418	Rivet	8	
47	690400285	Gasket	2	
48	LTC0665	Washer	2	
49	461005277	Spring Washer	2	
50	LTC0690A	Cap	2	
51	LTC0781A	Ring	2	
52	LTC1313	Seal, Oil	2	

\* Not Illustrated

GANG MOWER DRIVE

Illustration Number: gang\_mower\_drive\_27-03-2013

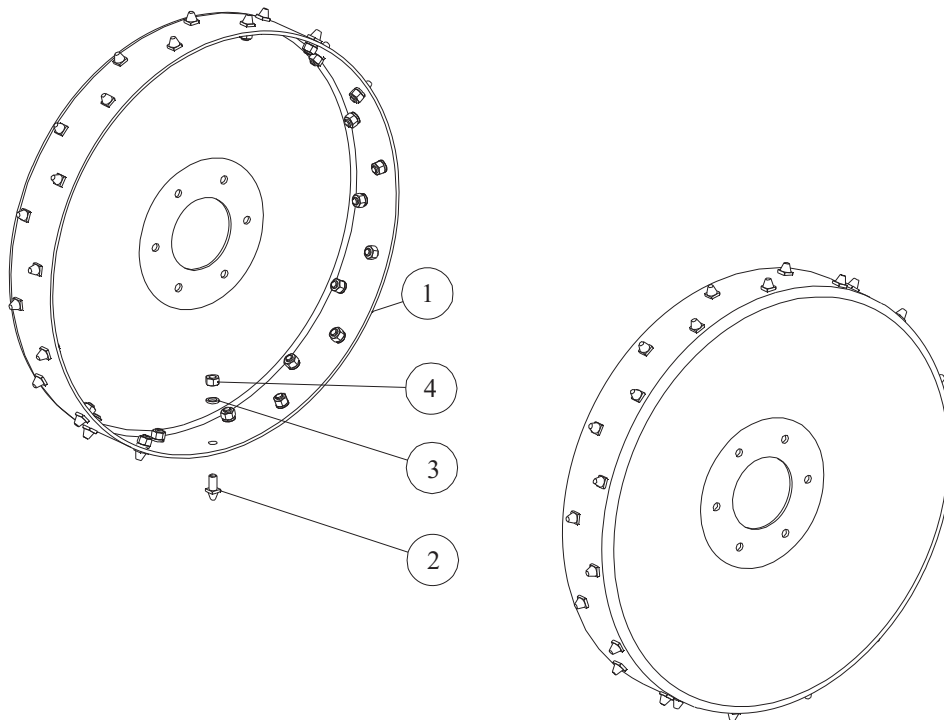


## GANG MOWER DRIVE

ITEM	PART NO.	DESCRIPTION	QTY.	
53	LTC1373B	Wheel & Pinion.	2	
54	LTC1420	Clip Rear Half	2	
55	LTC1421	Clip Rear Half	2	
56	LTC4509	Shaft	2	
58	LTC4546A	Main Gear Wheel.	2	
59	LTC4663A	Nut For Cylinder Spindle.	2	
60	LTC4700	Gear Cover	1	
61	LTC4720B	Gear Cover	1	
62	LTC4805	Piece, Distance	2	
63	LTC4806	Piece, Distance	2	
64	LTC4807	Piece, Distance	2	
65	690402782	Gasket	2	
66	LTC4881	Piece, Distance	2	
67	LTC4892	Gear Cover RH	1	
68	LTC4893	Gear Cover LH	1	
*	450323	Nut M6	4	
*	450389	Washer M6 x 12.5 x 1.8	4	
*	502000183	Rivet - 3/32 x 3/16	4	
69	442001713	Retaining Strip	2	
70	650001237	Felt Gasket	2	
71	MBB2204A	Fork, Clutch	2	
72	MBB2208B	Push Rod	2	
73	MBB220a	Housing, Rh	1	
74	MBB2216	Frame, RH Side	1	
78	MBB2217	Frame, Side LH	1	
79	LTC4544	Sleeve, Driving	2	
80	MBB2205	Main Axle	1	

GANG MOWER STEEL WHEELS

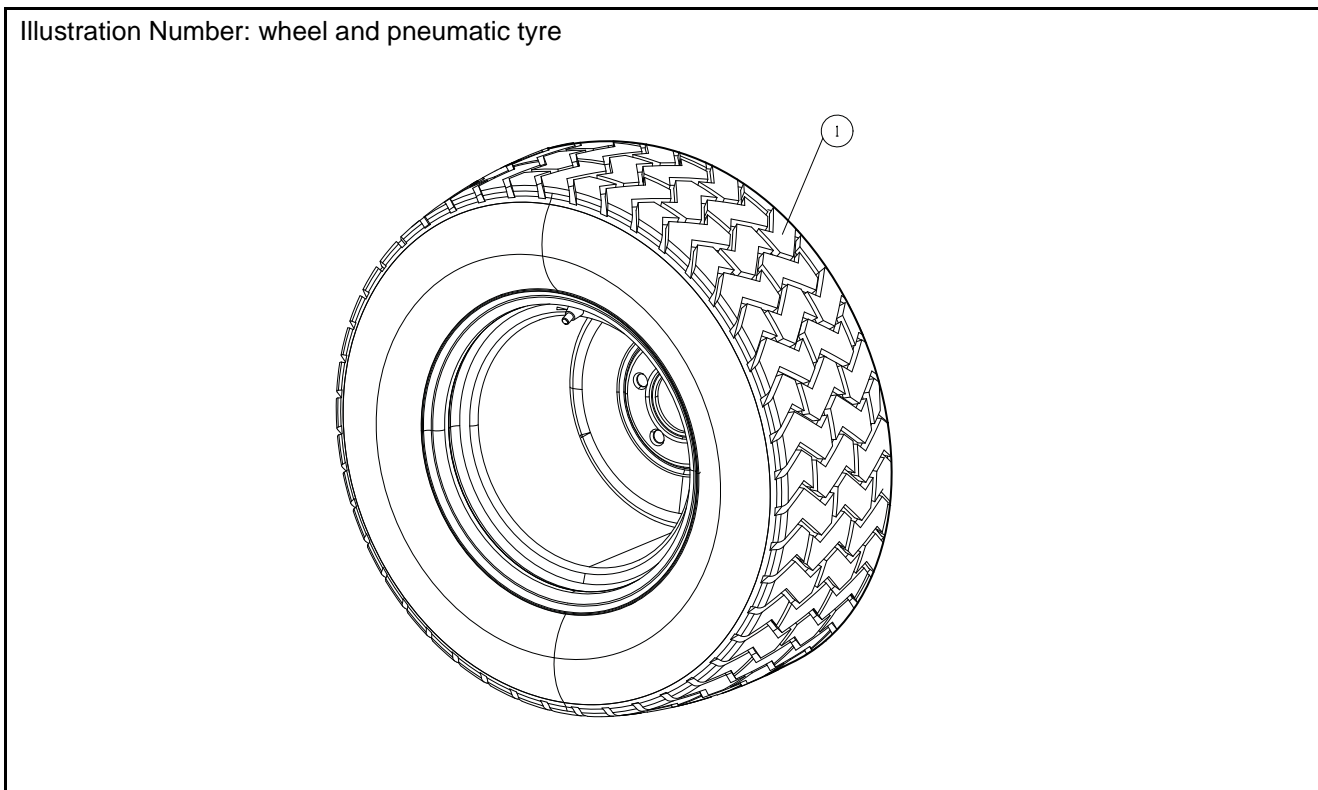
Illustration Number: steel wheels 02-04-2013



ITEM	PART NO	DESCRIPTION	QTY	
	LASY247	Steel Wheel	2	Sportcutter
1	444000060	• Steel Road Wheel	1	
2	469006182	• Road Stud	32	
3	452200087	• Lockwasher-3/8 X .590 X .092	38	
4	450020087	• Nut-hex 3/8-24	32	
*	450090795	• Nut-hex 3/8-24 Domed	6	
	LASY249	Steel Wheel	2	Magna
1	444000222	• Road Wheel (Steel)	1	
2	469006182	• Road Stud	30	
3	452200087	• Lockwasher-3/8 X .590 X .092	36	
4	450020087	• Nut-hex 3/8-24	30	
*	450090795	• Nut-hex 3/8-24 Domed	6	



GANG MOWER PNEUMATIC WHEELS



ITEM	PART NO.	DESCRIPTION	QTY	
1	4228380	Pneumatic Wheel 400-10-4ply Duro HF203	2	Sportcutter
1	008162200	Pneumatic Wheel LH	1	Magna
	008170289	• Tyre 4.00 X 12 - 2 Ply Trelleborg T63	1	
	646000076	• Inner Tube	1	
1	008162210	Pneumatic Wheel RH	1	Magna
	008170289	• Tyre 4.00 X 12 - 2 Ply Trelleborg T63	1	
	646000076	• Inner Tube	1	

\* Not Illustrated



## GANG MOWER MOUNTED 3 UNIT FRAME

ITEM	PART NO.	DESCRIPTION	QTY.
	LBMA048	Mounted 3 Unit Frame	1
1	452101285	• Washer - 1/2 X 1 - 1/8 X .104	6
2	454000530	• Split Pin - 3/16 X 7/8	6
13	842000044	• Lubricator - 1/4" Str	24
14	450425	• Lockwasher - M16 X 27.3 X 3.7	9
61	450020087	• Nut - Hex 3/8 - 24	198
68	001399090	• Nut - Hex 5/16 - 24, Nyloc	15
83	450020142	• Nut - Hex 1/2 - 20	10
84	452200087	• Lockwasher - 3/8 X .590 X .092	192
94	001399082	• Nut - Hex 1/4 - 28 Nyloc	12
106	001399032	• Nut - Hex 1/2 - 20 Nyloc	25
116	LTC1199A	• Stay	23
147	450020176	• Nut - Hex 5/8 - 18	9
168	MBB9252	• Fork End	1
169	MBB9253	• Stud End	1
199	454000776	• Split Pin - 1/4 X 2 - 1/4	2
200	461004776	• R - Clip	8
201	LTC3936 *	• Locking Pin	1
202	H060044AM*	• Chain	4
203	456992254	• Screw - Drive No10 X 5/8	4
204	450020354	• Nut - Hex 3/4 - 16 Thin	2
205	461005162	• Spring	1
206	LTC0326A	• Washer	2
207	LTC3116	• Distance Piece	1
208	LTC3114A	• Washer - 40x57.6x3	2
209	451030811	• Bolt - Hex 5/8 - 18 X 2 - 1/4	1
210	LTC3117	• Pivot Bush	2
211	LTC3118	• Swivel Arm	1
212	MBB0723	• Spacer - 9/32 X 3/8 X .41	3
213	LTC3537	• Lower Lift Link	3
214	456010111	• Screw - Hex 1/4 - 28 X 1 S	6
215	451031029	• Bolt - Hex 5/16 - 24 X 1 - 3/8	6
216	LTC3538	• Centre Link	3
217	LTC3536	• Lifting Link	3
218	451030683	• Bolt - Hex 1/2 - 20 X 3	15
219	461001786	• Tension Spring	3
220	649000362	• Lifting Lever Cover	3
223	LTC3084	• Lifting Lever	3
224	LTC3535	• Locking Pin	3
226	451031037	• Bolt - Hex 3/8 - 24 X 2 - 1/2	6
227	LTC3033	• Hinge Bracket	3
228	LTC3034	• U Boss	6
230	LTC3035	• Hinge Bolt	3



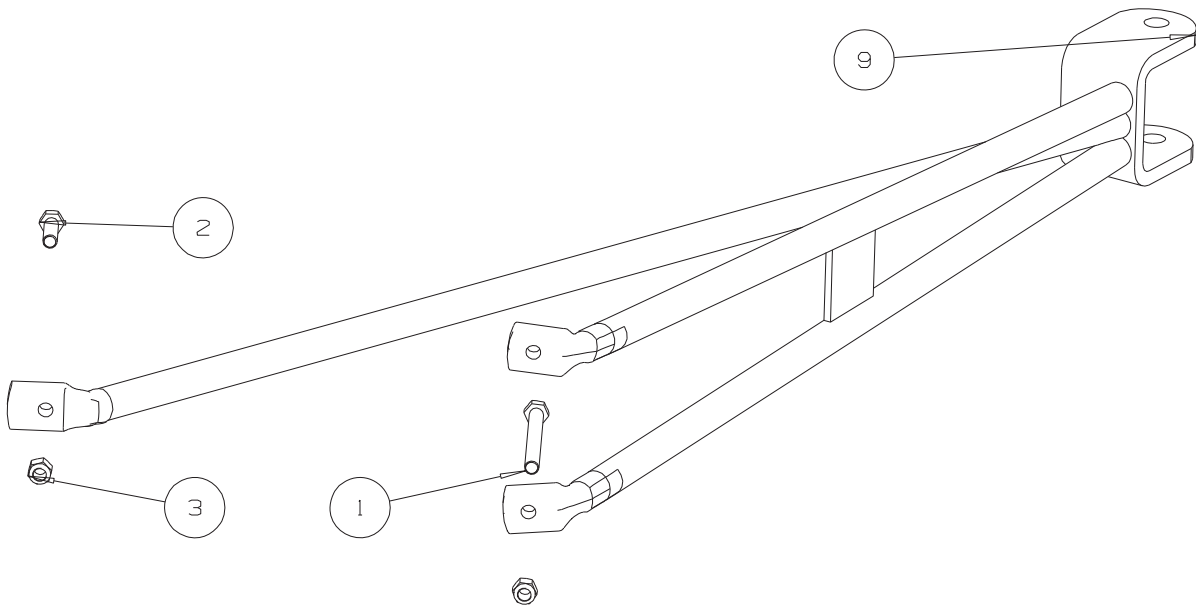
## GANG MOWER MOUNTED 3 UNIT FRAME

ITEM	PART NO.	DESCRIPTION	QTY.	
231	590000530	• Bush - Oilite 3/4 X 1 X 1	6	
240	MBB0916A	• Unit Frame LH	1	
241	456010420	• Screw - Hex 3/8 - 24 X 1 - 1/4	8	
242	451030382	• Bolt - Hex 3/8 - 24 X 2 - 3/4	4	
243	MBB0915A	• Unit Frame RH	1	
244	452200168	• Lockwasher - 1/2 X .763 X .116	4	
245	451030730	• Bolt - Hex 1/2 - 20 X 3 - 1/2	4	
247	MBB0909	• Shaft	4	
250	MBB0914	• Bearing	4	
251	MBB0913	• Hinge Bracket	4	
261	MBB0903	• Pin	2	
268	MBB0926	• Frame Assy	1	
269	MBB0920A	• Sliding Pin	4	
270	LTC3113	• Swivel Bar	1	

\* Not Illustrated

EXTENSION WINGS

Illustration Number Gang\_Mower\_Extension\_Wings



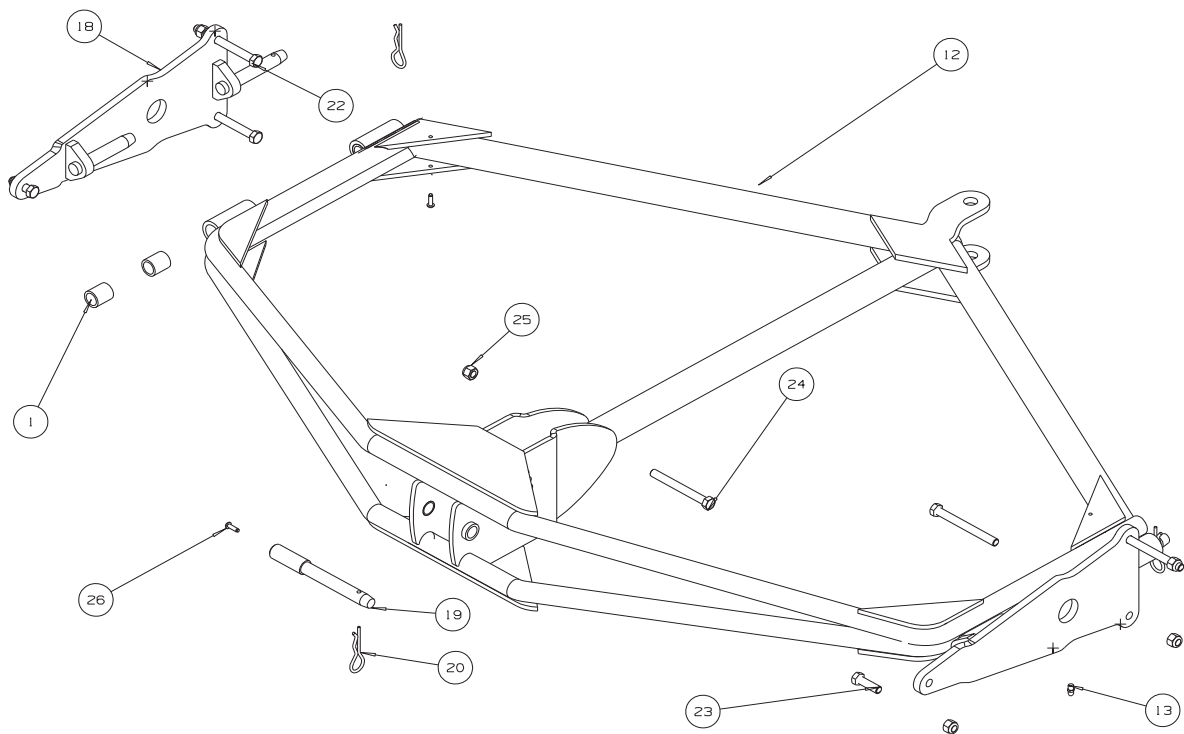
## EXTENSION WINGS

ITEM	PART NO.	DESCRIPTION	QTY.	
1	LASY544	Extension Wing	1	
1	451090102	• Bolt - Hex 3/8 - 24 X 3 - 3/4	1	
2	456010420	• Screw - Hex 3/8 - 24 X 1 - 1/4	1	
3	001399105	• Nut - Hex 3/8 - 24 Nyloc	2	
9	LTC3712	• Wing Assembly	1	

\* Not Illustrated

TWIN COUPLING FRAME

Illustration Number Gang\_Mower\_Twin\_Coupling\_Frame





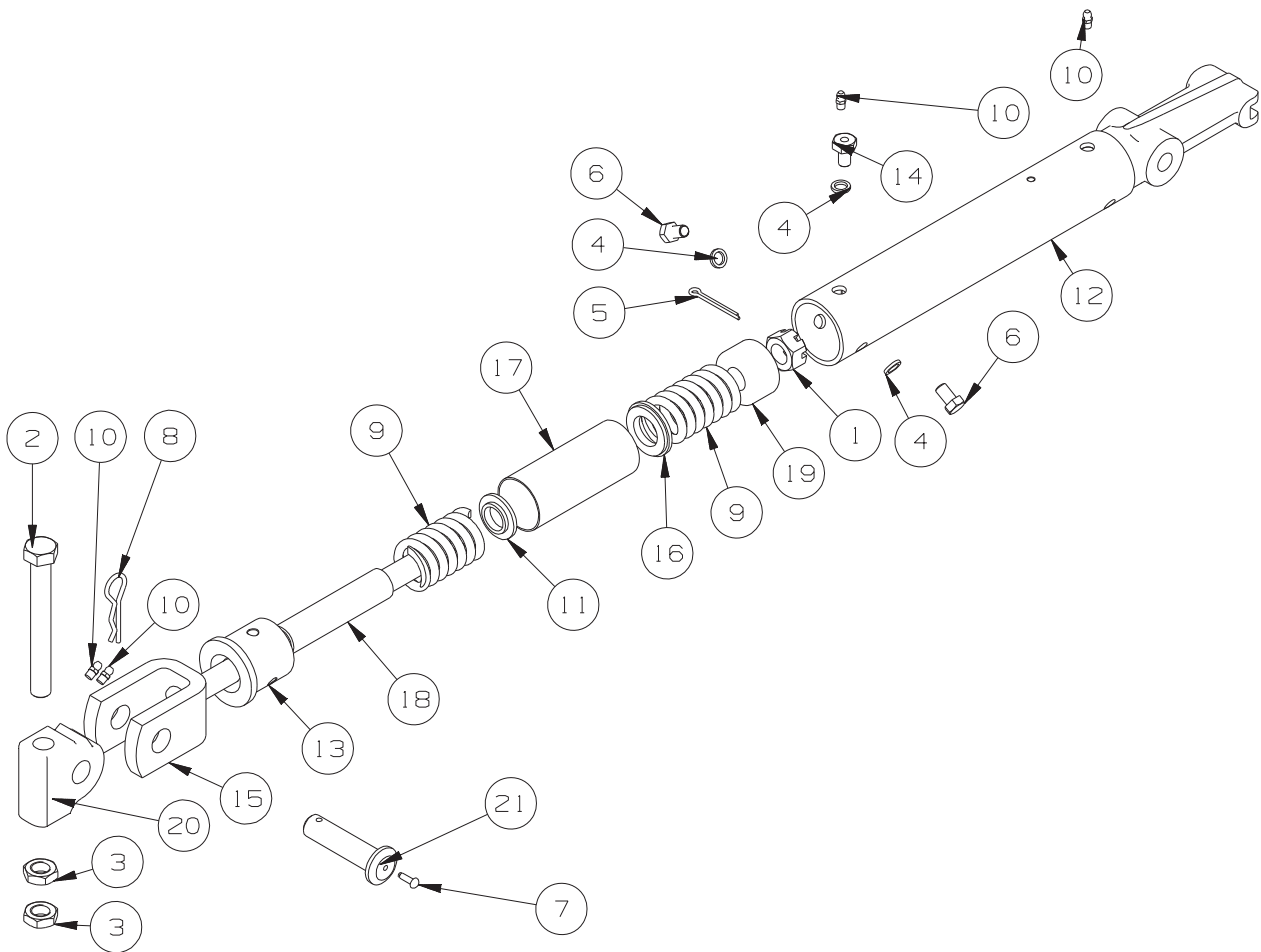
## TWIN COUPLING FRAME

ITEM	PART NO.	DESCRIPTION	QTY.	
	LASY546	Twin Coupling Frame	1	
1	LTC3756	• Bushing	8	
12	LTC3785	• Twin Coupling Frame	1	
13	842000044	• Lubricator - 1/4" Straight	4	
18	LTC3770	• Plate, Hinge	2	
19	LTC3571	• Locking Pin	1	
20	461004776	• R - Clip	3	
22	451090102	• Bolt - Hex 3/8 - 24 X 3 - 3/4	4	
23	456010420	• Screw - Hex 3/8 - 24 X 1 - 1/4	2	
24	451031053	• Bolt - hex 3/8 - 24 X 3 - 1/2	1	
25	001399105	• Nut - hex 3/8 - 24 Nyloc	7	
26	456992254	• Screw - Drive No10 X 5/8	3	
27	H060044AM*	• Chain	2	
28	H060044AP*	• Chain	1	
*	001270006	• Screw - Drive No6 x 3/8	2	
*	LTC3512	• Height Adjusting Tube	1	

\* Not Illustrated

SHORT DRAWBAR

Illustration Number Gang\_Mower\_Drawbar\_Short drawbar\_short



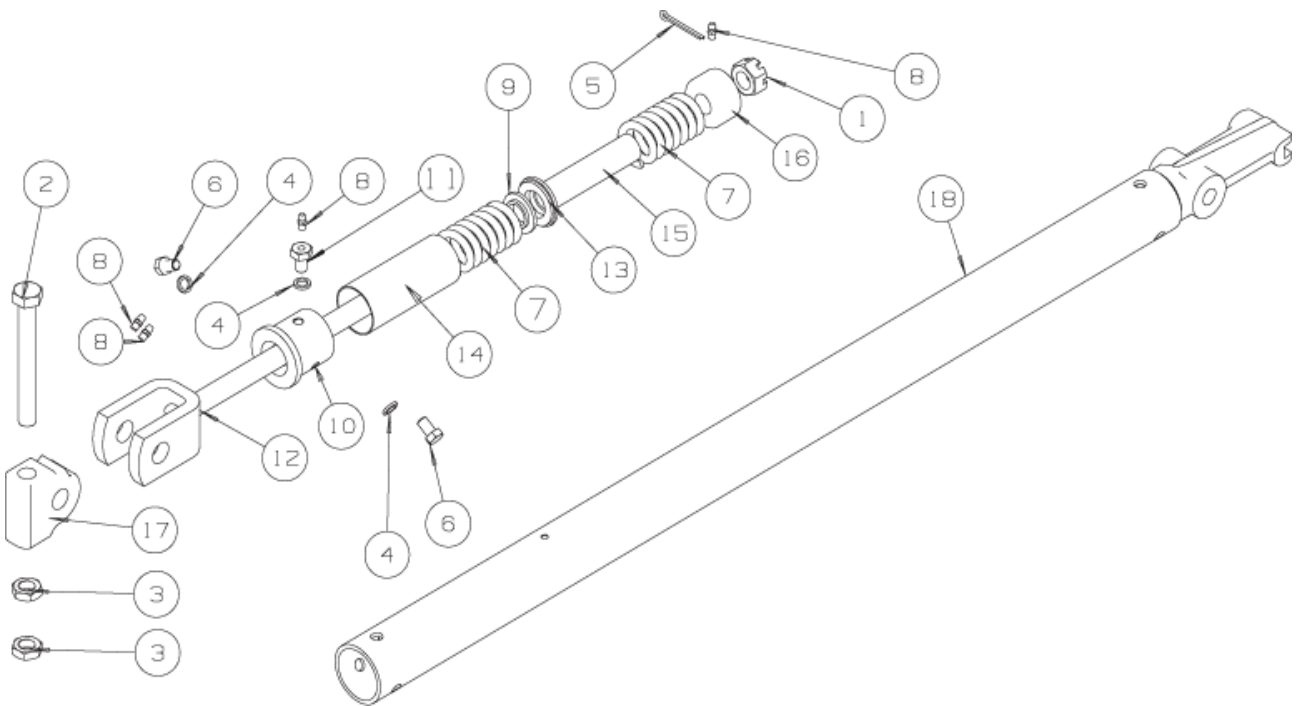
## SHORT DRAWBAR

ITEM	PART NO.	DESCRIPTION	QTY.	
	LASY542	Short Drawbar	1	
1	450020516	• 3/4 - 16 UNF Slotted Nut	1	
2	450081	• Bolt - Hex M16 - 2.0 X 130	1	
3	450334	• Nut - Hex M16 - 2.0	2	
4	452200087	• Lockwasher - 3/8 X .590 X .092	3	
5	454000572	• Split Pin - 3/16 X 1 - 3/4	1	
6	456010323	• Screw - Hex 3/8 - 24 X 5/8	2	
7	456992254	• Screw - Drive No10 X 5/8	1	
8	461004776	• R - Clip	1	
9	461005162	• Spring	2	
10	842000044	• Lubricator - 1/4" Straight	4	
11	LTC0326A	• Washer	1	
12	LTC3622	• Drawbar Tube	1	
13	LTC3625	• Bearing	1	
14	LTC3626A	• Lubricator Bolt	1	
15	LTC3627A	• Draft Eye	1	
16	LTC3629	• Washer (Large)	1	
17	LTC3630A	• Tube (Outer Distance)	1	
18	LTC3631	• Tube (Inner Distance)	1	
19	LTC3632Z	• Guide	1	
20	LTC3633A	• Universal Joint	1	
21	LTC3634	• Pin	1	
22*	H060044AM	• Chain	1	14 Links Long

\* Not Illustrated

LONG DRAWBAR

Illustration Number Gang\_Mower\_Drawbar\_Long



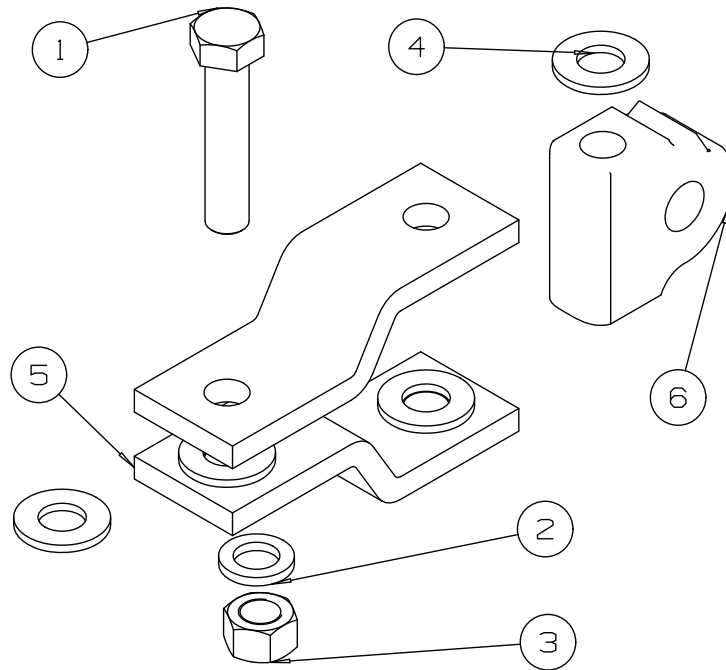
## LONG DRAWBAR

ITEM	PART NO.	DESCRIPTION	QTY.	
	LASY543	Long Drawbar	1	
1	450020516	• 3/4 - 16 UNF Slotted Nut	1	
2	450081	• Bolt - Hex M16 - 2.0 X 130	1	
3	450334	• Nut - Hex M16 - 2.0	2	
4	452200087	• Lockwasher - 3/8 X .590 X .092	3	
5	454000572	• Split Pin - 3/16 X 1 - 3/4	1	
6	456010323	• Screw - Hex 3/8 - 24 X 5/8	2	
7	461005162	• Spring	2	
8	842000044	• Lubricator - 1/4" Straight	4	
9	LTC0326A	• Washer	1	
10	LTC3625	• Bearing	1	
11	LTC3626A	• Lubricator Bolt	1	
12	LTC3627A	• Draft Eye W/a	1	
13	LTC3629	• Washer (Large)	1	
14	LTC3630A	• Tube (Outer Distance)	1	
15	LTC3631	• Tube (Inner Distance)	1	
16	LTC3632Z	• Guide	1	
17	LTC3633A	• Universal Joint	1	
18	LTC3652	• Drawbar Tube	1	

\* Not Illustrated

TRACTOR LINK

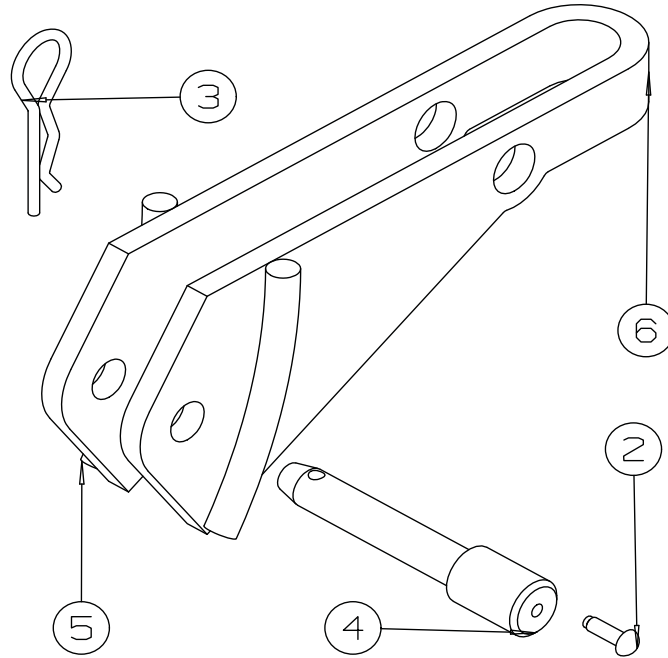
Illustration Number: gang\_Mower\_Tractor\_Link



ITEM	PART NO	DESCRIPTION	QTY	
	LASY560	Tractor Link	1	
1	451030861	• Bolt - Hex 5/8 - 18 X 3	1	
2	450425	• Lockwasher - m16 X 27.3 X 3.7	1	
3	450020176	• Nut - Hex 5/8 - 18	1	
4	452101293	• Washer - 5/8 X 1 - 3/8 X .128	4	
5	LTC0973	• Links	2	
6	LTC3633A	• Universal Joint	1	'Not in BOM

TRAILING HITCH

Illustration Number: gang\_Mower\_Trailing\_Hitch

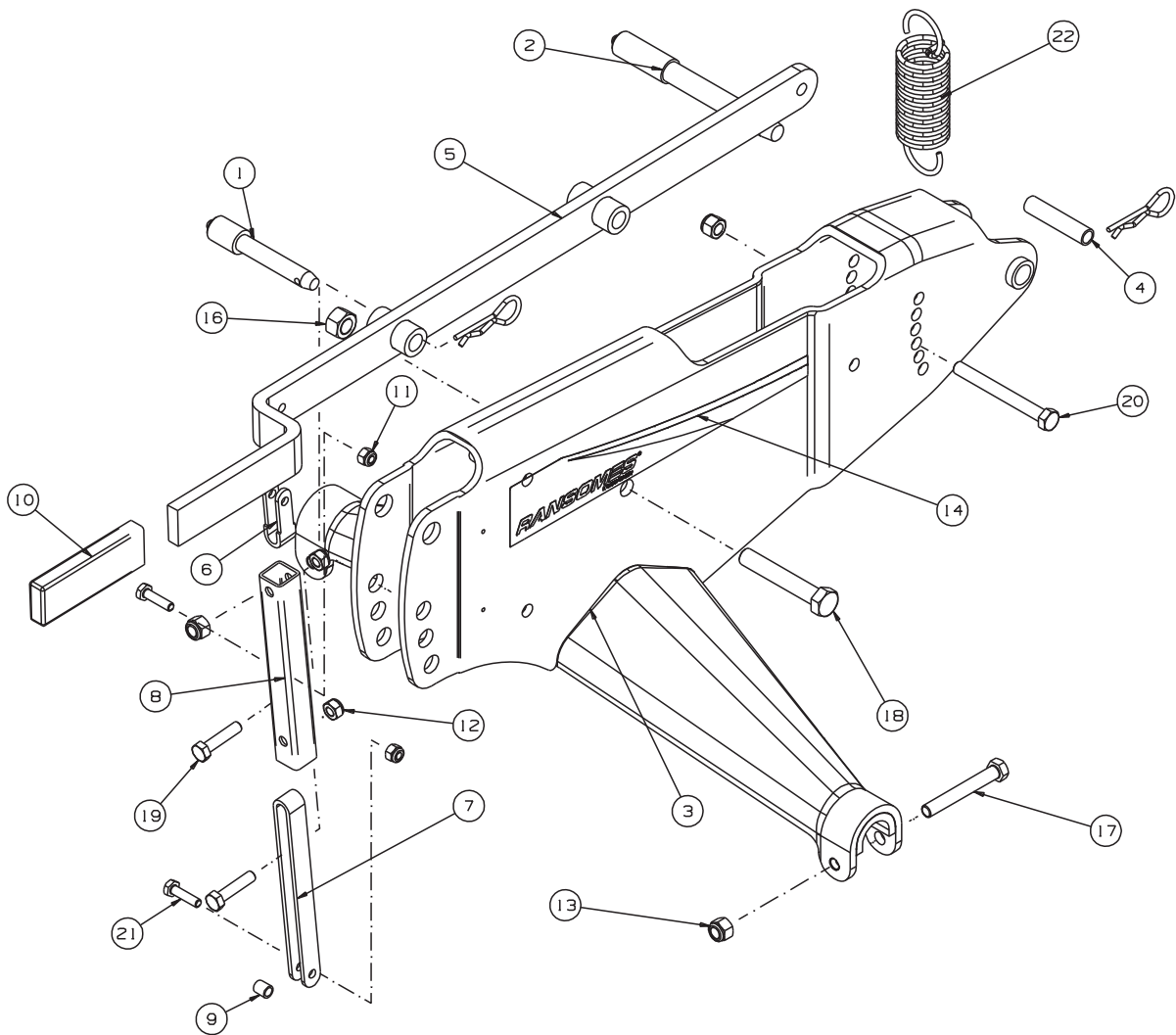


ITEM	PART NO.	DESCRIPTION	QTY
	LASY553	Trailing Hitch	1
1*	H060044AM	• Chain	1
2	456992254	• Screw - Drive No10 X 5/8	1
3	461004776	• R - Clip	1
4	LTC3535	• Locking Pin	1
5	LTC4205	• Stop Strip	2
6	LTC4203	• Main Plate	1
7	LTC4202	• Hitch	

\* Not Illustrated

UNIT FRAME

Illustration Number lmay600\_unit\_frame





## UNIT FRAME

ITEM	PART NO.	DESCRIPTION	QTY.	
1	LMAY600	Unit Frame	1	
	LMAY333	• Locking Pin	1	
*	456992254	•• Screw - Drive No10 X 5/8	1	
*	H060044AM	•• Chain	1	14 Links Long
1.1	461004776	•• R - Clip	1	
2	LMAY334	• Locking Pin	1	
*	456992254	•• Screw - Drive No10 X 5/8	1	
*	H060044AP	•• Chain	1	14 Links Long
2.1	461004776	•• R - Clip	1	
3	LTC3501A	• Main Frame Weld Assy	1	
4	LTC3512	• Height Adj Tube	1	
5	LTC3531A	• Lifting Lever Assy.	1	
6	LTC3536	• Lifting Link	1	
7	LTC3537	• Lower Lift Link	1	
8	LTC3538	• Centre Link	1	
9	MBB0723	• Spacer-9/32 X 3/8 X .41	1	
10	649000362	• Rubber Handle Grip	1	
11	001399082	• Nut - Hex 1/4-28 Nyloc	2	
12	001399090	• Nut - Hex 5/16-24, Nyloc	2	
13	001399105	• Nut - Hex 3/8-24 Nyloc	3	
14	4133204	• Decal - Gang Unit LH	1	
15*	4133205	• Decal - Gang Unit RH	1	
16	450020142	• Nut - Hex 1/2-20, Gr 1	1	
17	451030382	• Bolt - Hex 3/8-24 X 2.3/4	2	
18	451030683	• Bolt - Hex 1/2-20 X 3	1	
19	451031029	• Bolt - Hex 5/16-24 X 1-3/8	2	
20	451031053	• Bolt - Hex 3/8-24 X 3.1/2	1	
21	456010111	• Screw - Hex 1/4-28 X 1	2	
22	461001786	• Tension Spring	1	
*	LTC3571	• Locking Pin	1	
*	LTC3535	• Locking Pin	1	
*	461004776	• Retaing Clip	2	
*	H060044AP	• Chain	1	14 Links Long
*	H060044AM	• Chain	1	14 Links Long
*	456992254	• Screw - Drive No10 X 5/8	2	

\* Not Illustrated







Europe & Rest of The World Except North & South America

Ransomes Jacobsen Limited  
West Road, Ransomes Europark, Ipswich, IP3 9TT  
English Company Registration No. 1070731  
[www.ransomesjacobsen.com](http://www.ransomesjacobsen.com)

North & South America

Jacobsen, A Textron Company  
11108 Quality Drive, Charlotte,  
NC 28273, USA  
[www.Jacobsen.com](http://www.Jacobsen.com)